

Evening Auction

TUESDAY - MAY 19 AT 6:00 P.M.

Located at 3118 Boyer Rd. - Coloma, MI 49038

West of Coloma on Red Arrow Hwy. to Boyer Rd. then just South to property. East of I-196 Exit #1 on Red Arrow Hwy.



32' X 48' POLE BARN

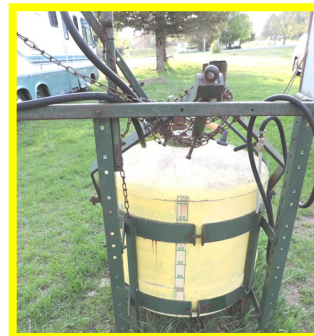


VIEW OF BARN & LAND

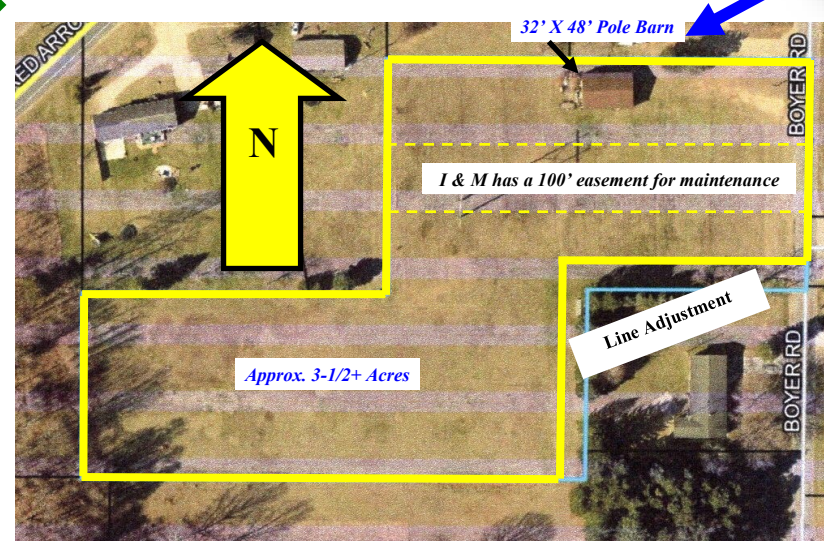
FARM TRACTOR
-FARMTRAC 535 Diesel Tractor,
SN: T2081160,
830 Hours, Great Tires!



FARM IMPLEMENTS
-King-Kutter II 5 Ft. P.T.O. Tiller,
Rear 3-Point
-Douglas 6 Ft. Finish Mower,
3-Point
-Ferguson 2-14" Bottom Plow,
3-Point
-6 Ft. Disk, 3-Point
-6 Ft. 2-Section Drag, 3-Point
-65 Gal. Water Wheel Planter,
3-Point
-John Deere 90 Gal. Sprayer,
3-Point
-FIMCO Lawn Sprayer



FEW SMALL ITEMS
-5,500 lbs. Pallet Jack * 3-Ton
Long Ram Jack * Ariens 11528
Snow Blower * Misc. Garage
Items * Pile Wood Vegetable
Stakes * Few Metal "T" Post.



AERIAL VIEW

APPROX. 190 FT.
BOYER ROAD

32' X 48' Pole Barn

I & M has a 100' easement for maintenance

Approx. 3-1/2+ Acres

Line Adjustment

N



TERMS: CASH, Good Check or Credit/Debit Card with Proper I.D. - Not responsible for accidents or goods after sold. All items are being sold in "AS-IS" condition. Announcements made day of auction supersede any printed material. 10% Buyer's-Premium in effect.

OWNER

Catherine Kramer

3118 Boyer Rd.
Coloma, MI 49038

IN ASSOCIATION WITH



**ANNA
GLASSMAN
(269) 757-6057
GLASSMAN
REAL ESTATE**

GLASSMAN AUCTION SERVICE

AUCTIONEERS & REAL ESTATE

P.O. Box 315 * 6815 E. Main St.
Eau Claire, MI 49111

John Glassman 269-757-3315

www.glassmanauctions.com

269- 757-3315



Real Estate Offered At 6:00 P.M.

3.75 Acres +/-

- Approx. 190 Ft. of Boyer Rd. Frontage
- 32 Ft. X 48 Ft. Pole Barn w/Concrete Floor,
7' x 8' & 9' x 10' Overhead Doors,
Also a service door.
- Coloma Schools/Coloma Township
- Part of #11-08-0031-0011-21-7
- Subject to I & M Elec. Easement of 100'

Real Estate Terms: \$5,000 Non-Refundable Deposit Day Of Auction, Balance Due In 30 Days. Transfer with New Deed and Title Insurance. Sold in "AS-IS" Condition. Buyer to Pay for Closing Fee, Recording Fees and Any Fees Required by Their Lender, If Any - Plus 10% Buyers Premium. Announcements Made Day of Auction Supersede Any Printed Material. Contact Coloma Township for Property Use And Zoning. Offers are subject to acceptance. Subject to survey, sold by the parcel +/-.